

Using the Thin Clients @ Rappahannock High School

Powering on the thin client:

Press the rectangular power button on the thin client.

This will cause it to be back lit with a blue light, and the screen will show the start up. You may have to wiggle the mouse as the screen will go dark and it will seem that nothing is happening, but the login screen is actually up and waiting.



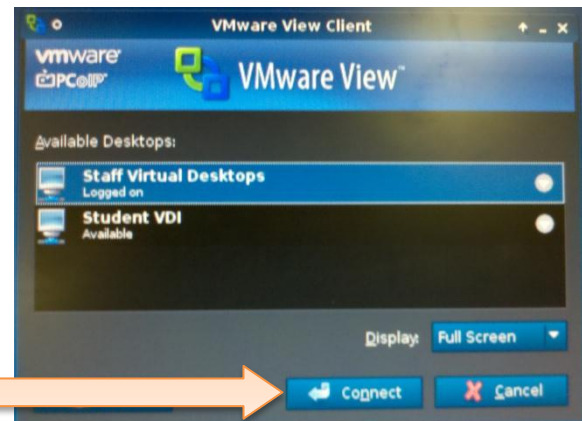
The Initial Login Screen:



When the login screen appears, enter your network username (usually your first initial and last name) and password. The domain should default to RCSCHOOLS. Then click on the login button.

Select your Virtual Machine:

The next screen will show the virtual desktops you have rights to. Most users will have only one option here. Highlight the selection and click on the connect button at the bottom of the window.



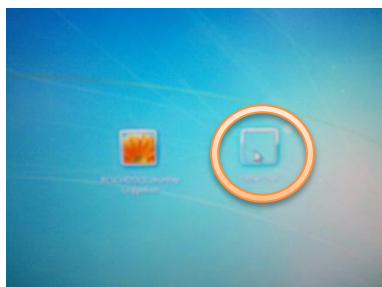
You will then see this window indicating that your desktop is being accessed and delivered to you.



First time logging into the desktop:



The first time you log into your desktop, it will have a generic username like STAFFVDI21. You will have to click on the switch user button so you can enter your network credentials and log into your desktop. You should only have to do this step the first time logging in or after we make changes to the pool of images (like adding software or updates).



Once you click on the switch user button you see a screen like the one to the left. Choose the blank box that says other user below it.

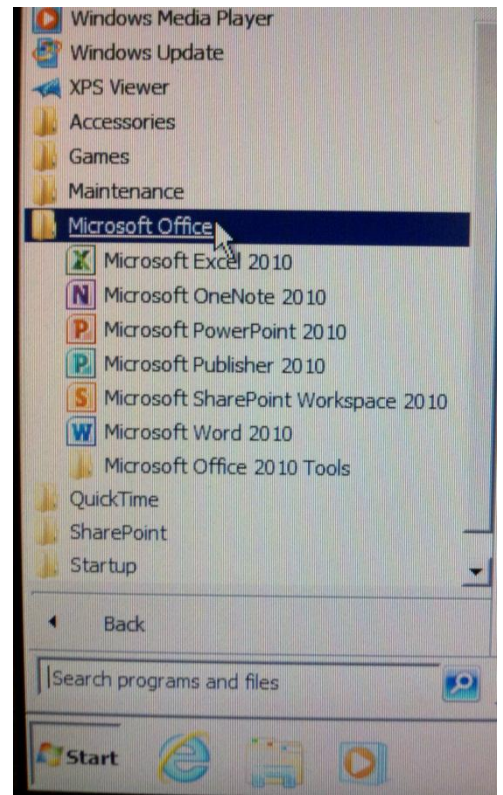
Then enter your network login credentials (same as before) into the next screen as shown to the right, and hit the enter key. Then you should have a familiar Windows environment load. The base image is Windows 7 so it will be a bit different than the other

school computers that still run Windows XP.



Navigating Your Desktop:

The desktop is rather bare but most of what staff and student use should be available or soon to come. By clicking on the start button and then going to All Programs, you will find the Microsoft Office Suite with Word, Excel, Power Point, and Publisher. Office also has a tool called OneNote, if you have not tried it out, play around with it a bit. I think you will find it to be very useful. The other items you are used to seeing are found in the RHS Apps folder and the H Shortcuts folder. The H Shortcuts folder you are familiar with, it contains links to network and internet resources. The teacher folder has links to power teacher, safari montage (video streaming), webmail, and other items. The RHS Apps folder has programs that have been virtualized to run on the thin clients. The contents of the RHS Apps folder are shown below. We hope to continue to add to the programs available in the RHS apps folder.



As you explore the thin client, if there are any additions or items that are not functioning as they need to, please let the technology department know.

To exit you simply log off as you would normally do from the start button. Then to power off the thin client, go to the HP button in the lower left corner and select Poweroff as shown here.

